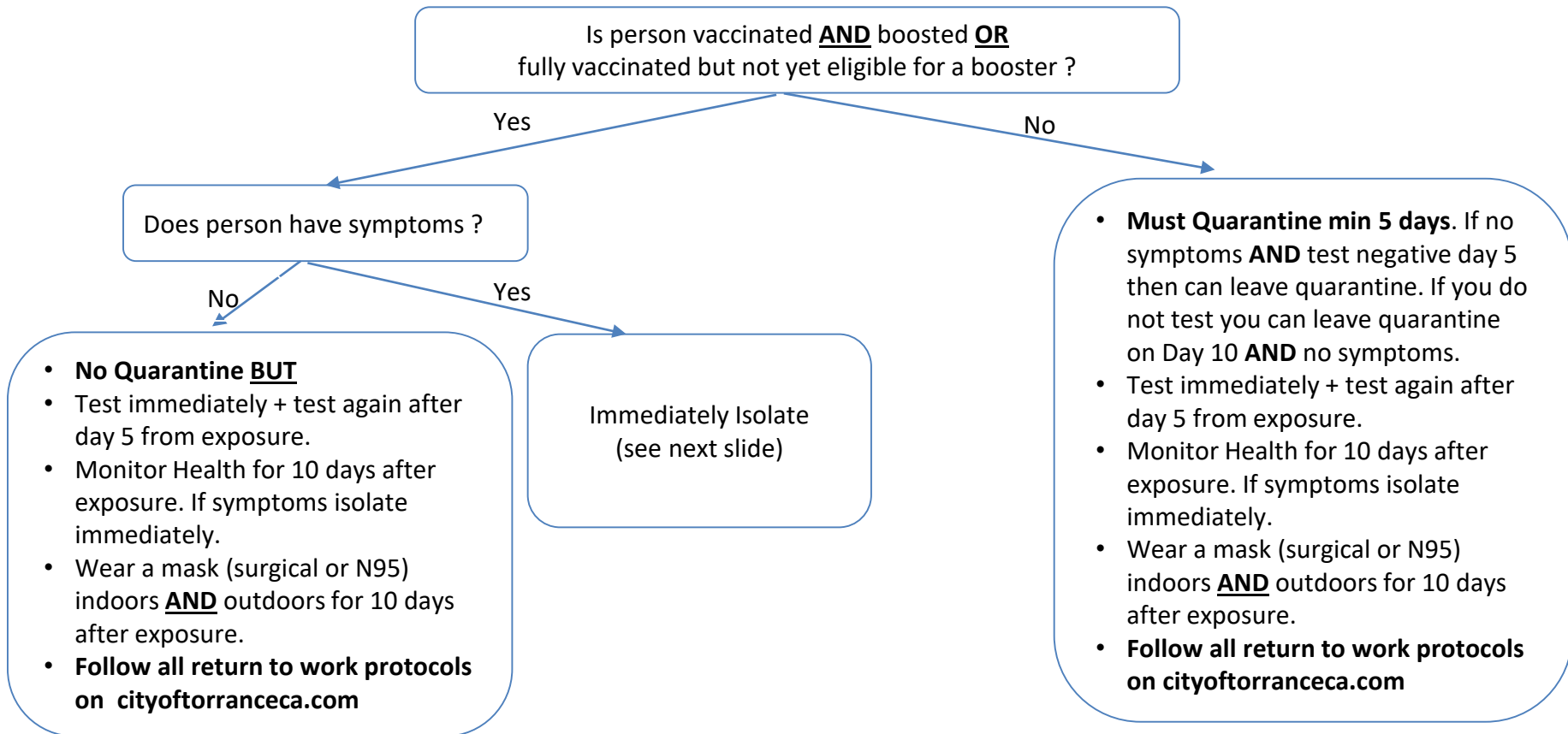


# Quarantine Protocols – When person comes in close contact\* with covid positive



Close Contact means – (1) Person was within 6 feet of someone with COVID-19 for a total of 15 minutes or more over a 24-hour period. **OR** (2) You had unprotected contact with body fluids and/or secretions from someone with COVID-19. Source: <http://publichealth.lacounty.gov/acd/ncoron2019/covidquarantine/>